

FLAMEPROOF

CP../EFSRC.. Series - Copper-free aluminium

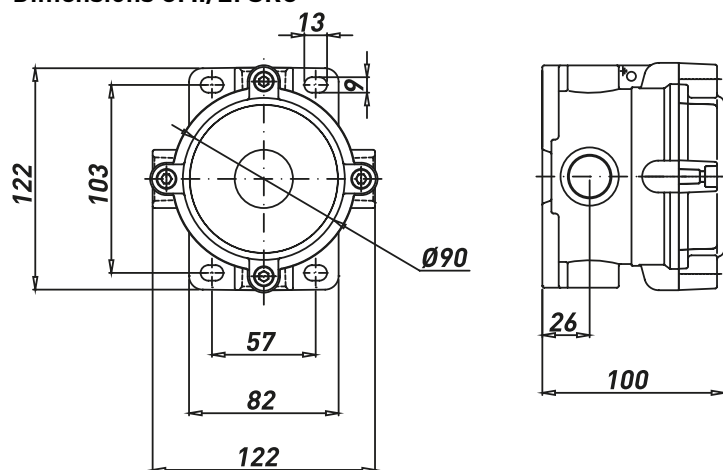


- CP../EFSRC.. Series is suitable for indoor and outdoor application and are used as push-button stations, switches, motor control stations...;
- The enclosures are made of copper-free aluminium and complete with threaded hubs suitable for cable glands or conduit, connection does not affect the internal void, which remains available for terminals wiring;
- The enclosures offer an Ex d IIC mode of protection and can be equipped with different components such as: step, change-over, selector switches...
- This series is tailor made according to customer specifications in terms of quantity and type of operators. Our technical department will select the most suitable solution within the limits allowed by the certificate.

TECHNICAL FEATURES

Material	Copper-free aluminium
IP rating	IP66
Ambient temperature range	-50°C to +60°C (ATEX) -60°C to +60°C (IECEX)
Approvals	ATEX: 03ATEX0009 IECEX: BKI 15.0002 EAC: RU C-IT.BH02.B.00588/20
Marking	II 2 GD Ex d IIC T(*) Gb Ex t IIIC T(*) Db IP66 * T6/T85°C, T5/T100°C, T4/T135°C
Surface treatment	Polyurethane painting cycle - Blue RAL5014 (other colour available upon request)
Thread	Metric pitch 1.5, ANSI B1.20.1 NPT
Standard certificate label	Made by self adhesive UV and corrosion resistant polyester, approved by certified Laboratory.
Optional accessories	Internal anticondensate painting Traffolyte/Stainless steel certificate label Hot deep galvanized steel or Stainless Steel AISI316 stand/canopy.

Dimensions CP../EFSRC



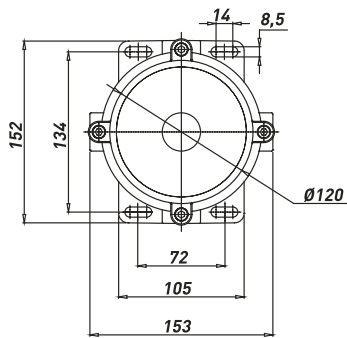
CPC/CPT/CPX EFSRC-1

CP../EFSRC.. Series - Push button stations - Available versions

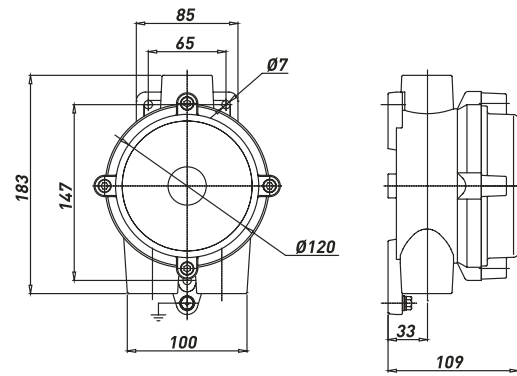
TYPE	AVAILABLE ENTRIES		CONFIGURATION OF ENTRIES	MAX. N° OF OPERATORS	ENCLOSURE DIAMETER [mm]
	METRIC	NPT			
CPC-26/EFSRC-1	2 X M25	2 X 3/4"NPT		1	90
CPT-26/EFSRC-1	3 X M25	3 X 3/4"NPT		1	90
CPX-26/EFSRC-1	4 X M25	4 X 3/4"NPT		1	90

For complete push button stations, ask to the Sales Dept.

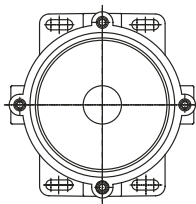
Dimensions CPS../EFSRC



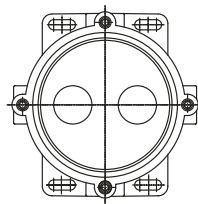
CPSC/CPST/CPSX



CPSG







EFSRC-1



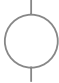
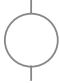
EFSRC-2

CPS../EFSRC.. Series - Push button stations - Available versions

TYPE	AVAILABLE ENTRIES				CONFIGURATION OF ENTRIES	MAX. N° OF OPERATORS	ENCLOSURE DIAMETER [mm]
	METRIC		NPT				
CPSC-../EFSRC..	2 X M25	2 X M32	2 X 3/4"NPT	2 X 1" NPT		2	120
CPST-../EFSRC..	3 X M25	3 X M32	3 X 3/4"NPT	3 X 1" NPT		2	120
CPSG-../EFSRC..	3 X M25	3 X M32	3 X 3/4"NPT	3 X 1" NPT		2	120
CPSX-../EFSRC..	4 X M25	4 X M32	4 X 3/4"NPT	4 X 1" NPT		2	120

For complete push button stations, ask to the Sales Dept.

CP../CPS.. EFDCN Series - Standard versions*

TYPE	CODE**	ENTRIES	OPERATOR	ENCLOSURE DIAMETER [mm]	WEIGHT [Kg]
CPC-26/EFSRC-220	B012074010135	2 X M25 X 1,5 	DISCONNECTOR SWITCH, 2 POLE, 20A	90	1.10
CPC-26/EFSRC-D-220	B012074010160		DEVIATOR SWITCH, 2 POLE, 20A	90	1.15
CPC-26/EFSRC-C-220	B012074010161		COMMUTATOR SWITCH, 2 POLE, 20A	90	1.15
CPSC-26/EFSRC-320	B012074010166		DISCONNECTOR SWITCH, 3 POLE, 20A	120	1.15
CPSC-26/EFSRC-D-320	B012074010167		DEVIATOR SWITCH, 3 POLE, 20A	120	1.20
CPSC-26/EFSRC-C-320	B012074010168		COMMUTATOR SWITCH, 3 POLE, 20A	120	1.20
CPC-26/EFSRC-220	B012074010162	2 X 3/4"NPT 	DISCONNECTOR SWITCH, 2 POLE, 20A	90	1.10
CPC-26/EFSRC-D-220	B012074010163		DEVIATOR SWITCH, 2 POLE, 20A	90	1.15
CPC-26/EFSRC-C-220	B012074010164		COMMUTATOR SWITCH, 2 POLE, 20A	90	1.15
CPSC-26/EFSRC-320	B012074010169		DISCONNECTOR SWITCH, 3 POLE, 20A	120	1.15
CPSC-26/EFSRC-D-320	B012074010170		DEVIATOR SWITCH, 3 POLE, 20A	120	1.20
CPSC-26/EFSRC-C-320	B012074010171		COMMUTATOR SWITCH, 3 POLE, 20A	120	1.20

*CP../EFSRC Series are supplied ATEX/TR-CU certified. For IECEx certificate, ask to our Sales Dept.

*CP../EFSRC Series are supplied painted. Standard painting cycle: C4. Colour: Blue RAL5014 (Other colours are available upon request)

**Codes refer to drilled enclosures with 1 standard operator.

For different customized configurations, ask to our Sales. Dept.